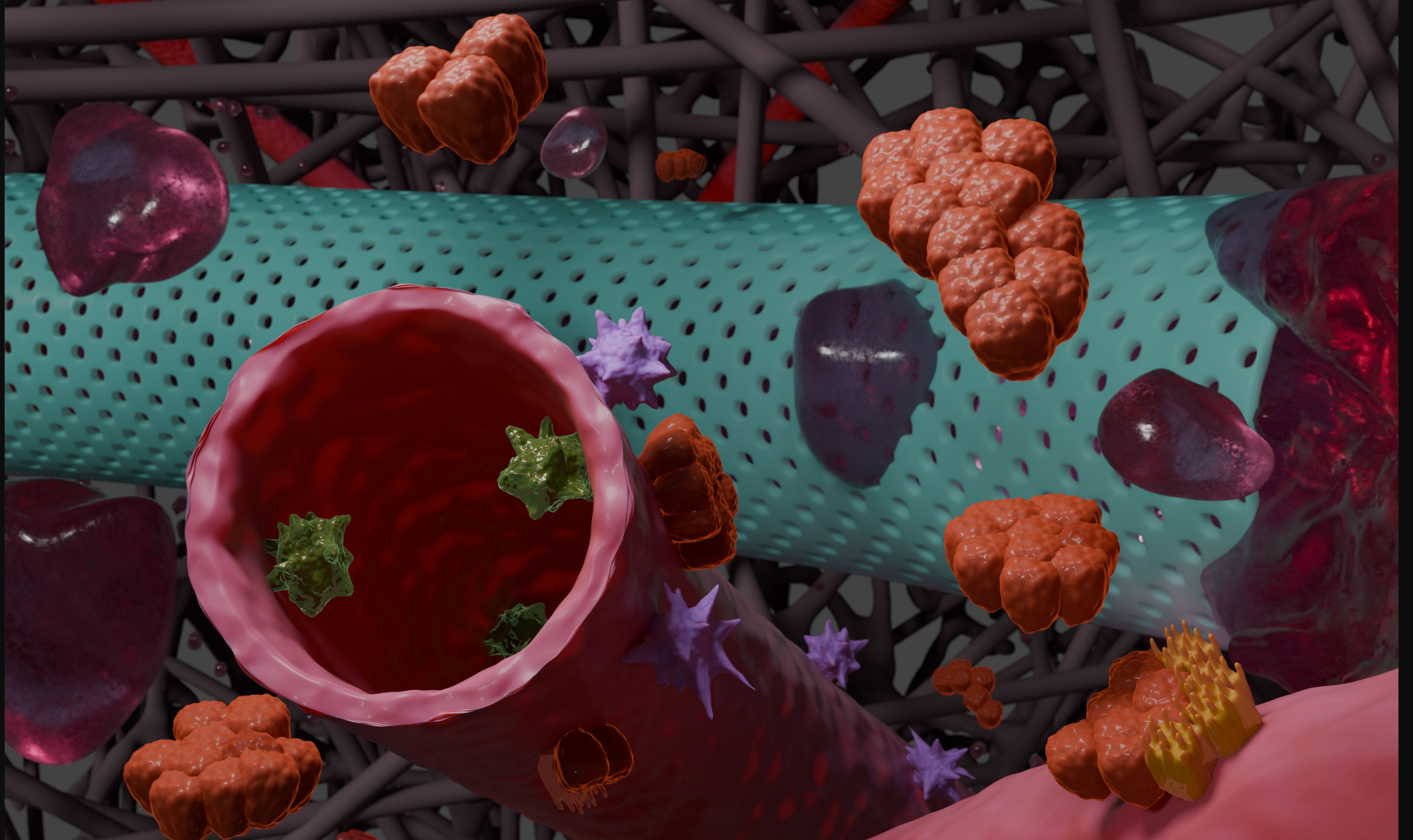


# Liver cell diversity

What does it look like inside ?





A 3D illustration of liver tissue. In the upper center, a cluster of orange, rounded hepatocytes is shown. Below it, a smaller cluster of similar cells is visible. To the right, a larger cluster of cells is shown, with one part being orange and another part being yellow and spiky, representing cholangiocytes. The background features a network of dark grey branching structures and several purple, star-shaped cells. The overall color palette is dominated by reds, oranges, and purples.

Hepatocytes

Liver cells

Cholangiocytes

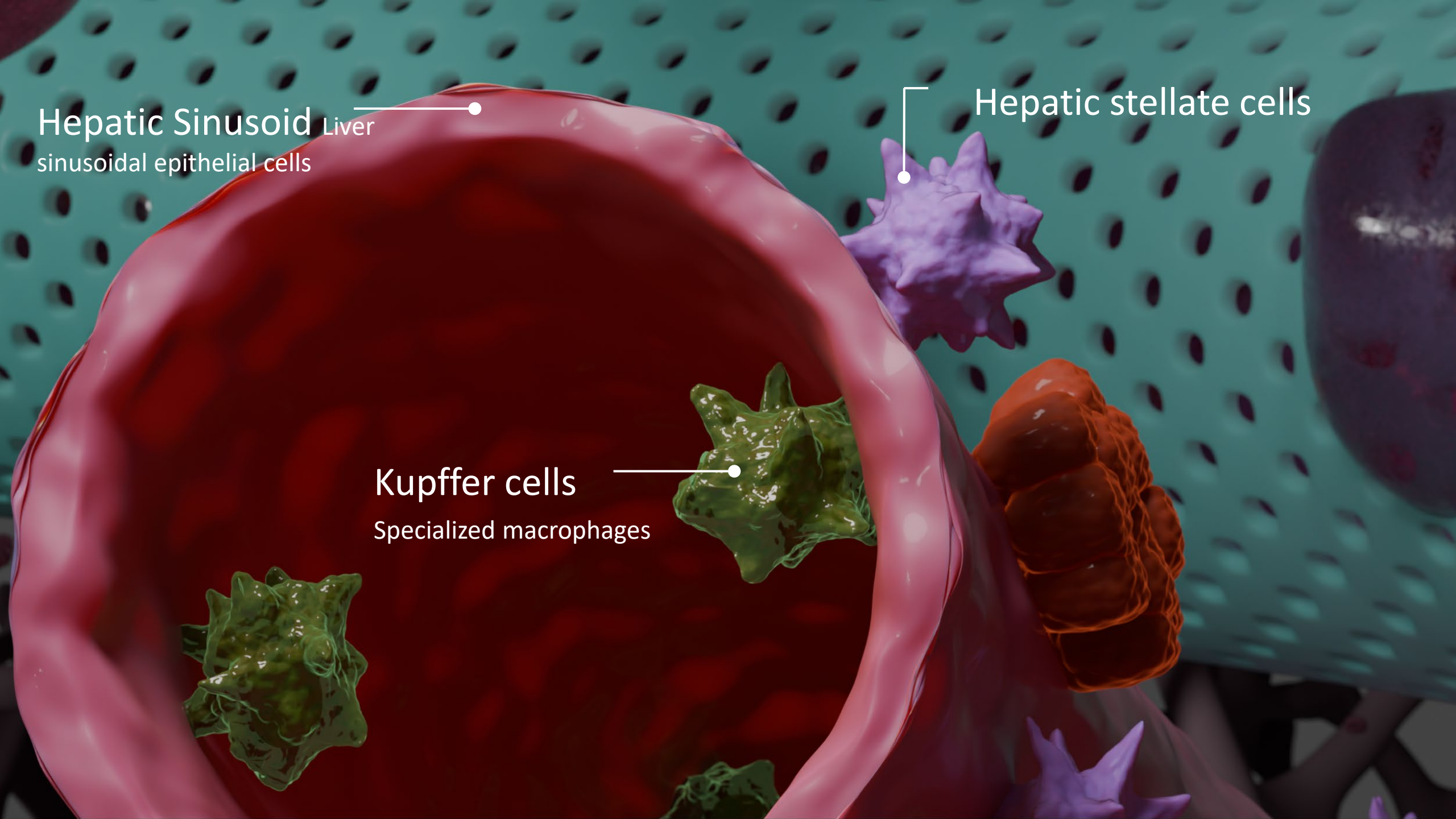
Specialized epithelial cells

Hepatic Sinusoid  
sinusoidal epithelial cells

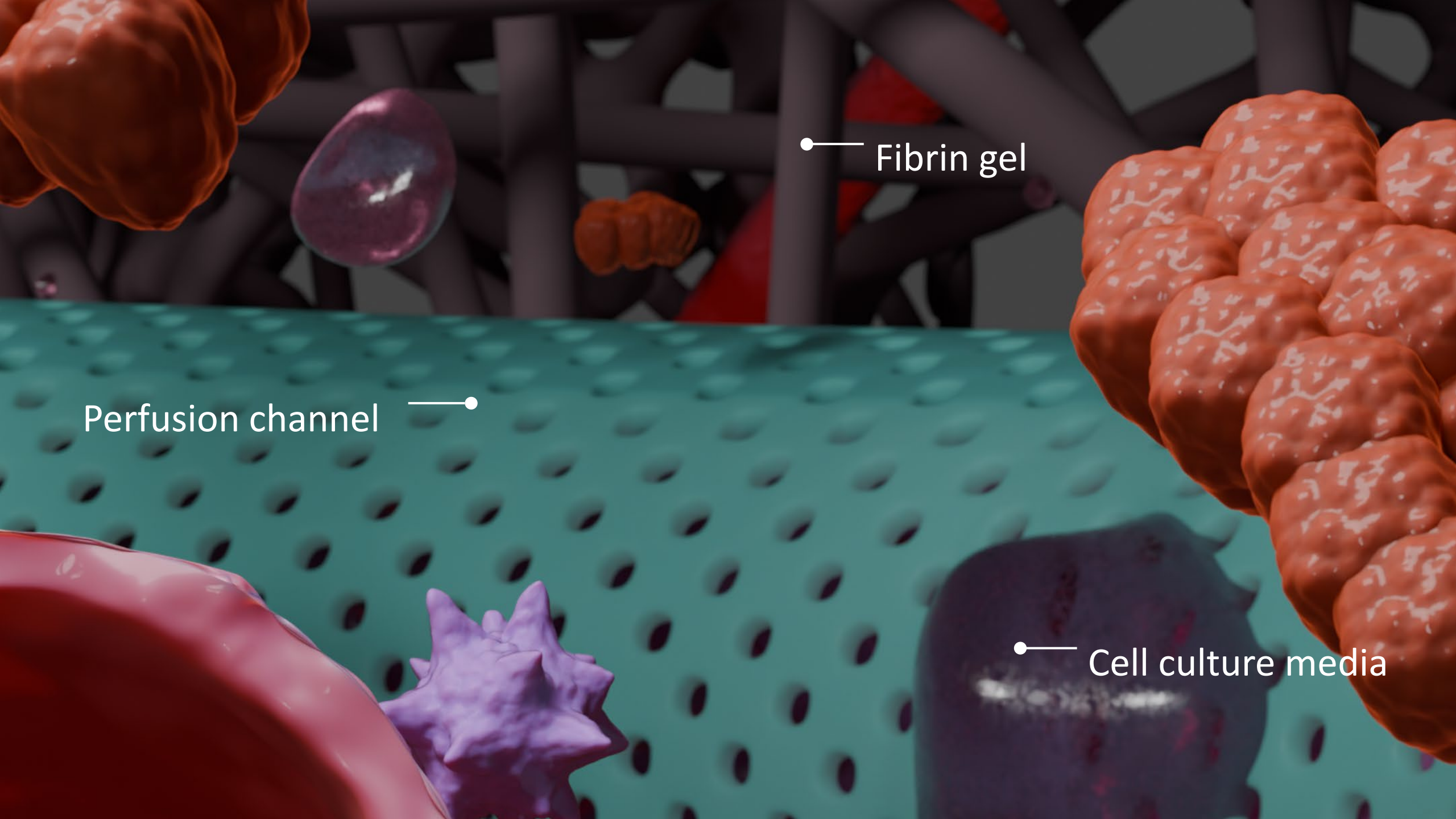
Liver

Hepatic stellate cells

Kupffer cells  
Specialized macrophages





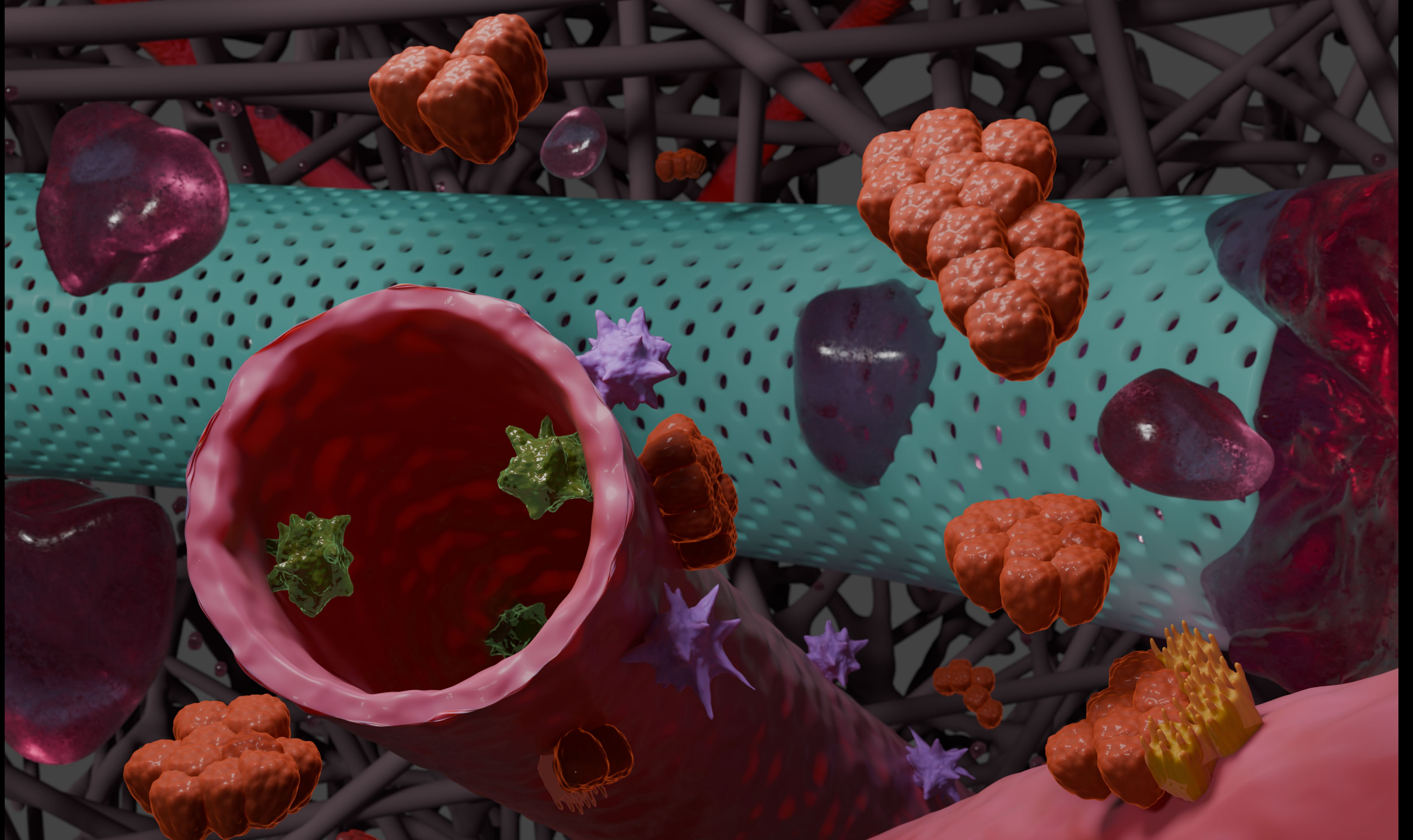


• Fibrin gel

Perfusion channel —•

• Cell culture media



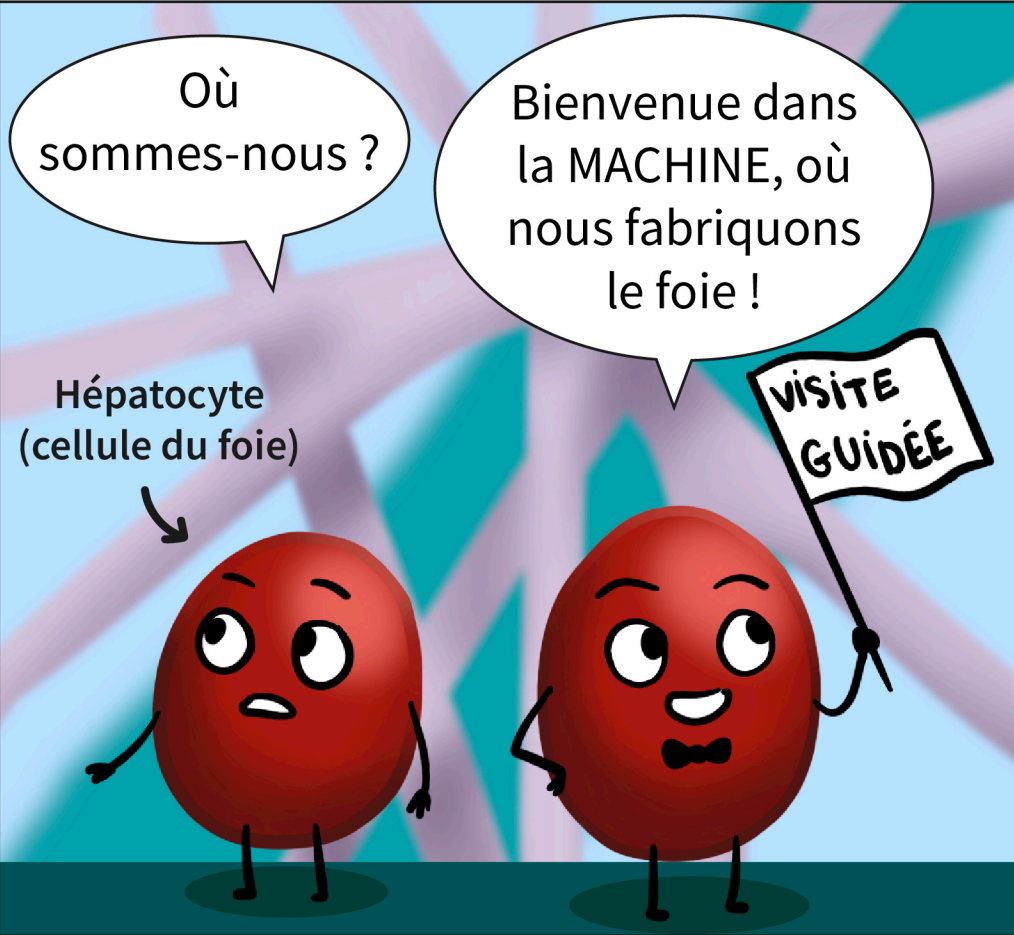
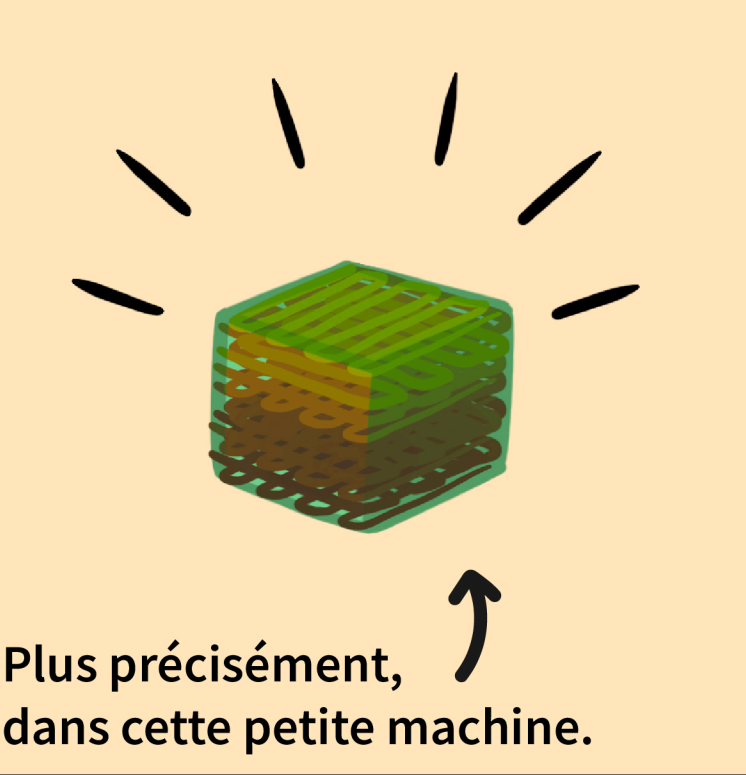




Chaque année, des milliers de Canadiens attendent une greffe d'organe.



Et s'il était possible de biofabriquer ces organes ?



Les cellules y sont alimentées par du liquide acheminé par un canal poreux.

